

# ORTHOTIC CONCEPT

The key attributes of the scanner are:

**Captures all data types** – Foot, foam box and cast (Fig.1)

**Positional flexibility** – Weight-on, Weight-off and Semi-weight bearing modes.

## Superior data quality

- Foot - Captures the back of the heel as well the plantar surface (Fig. 3)

- Foam Box & Cast – Captures the deepest of cavities, including undercuts ( only with E500 model )

**Fast & accurate** – scans accurate to 0.4mm are retrieved within seconds.

**Analysis Tools** - Interactive alignment (Fig. 4) and measurement tools aid with prescription and orthotic design.

**Paperless** - Intelligent digital prescription eliminates paper entry

**Direct lab link** – the complete order can be automatically transferred to the laboratory.



Fig. 1 Scanning a foot, a cast and a foam box



Fig. 2 - Patient details are securely managed

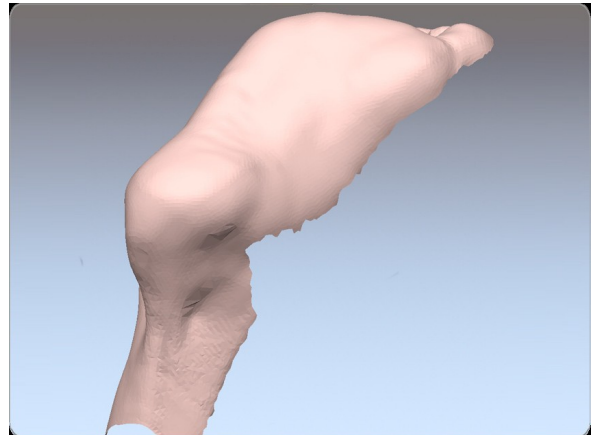


Fig. 3 Foot scan - Captures the back of the heel as well the plantar surface.

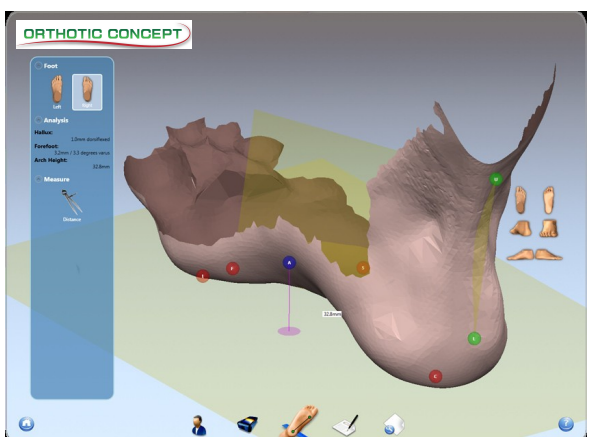


Fig. 4 - Scan analysis and alignment

Unit 7, 3400 14th Avenue

Markham, ON, L3R0H7

Tel: 905-604-3035

Fax: 905-604-3735

www.orthoticconcept.com